

	The ORANGE LED flashes every second.	The sensor goes into security mode.	<b>1</b> Cut and restore power supply.
	The ORANGE LED flashes 1 x.	The sensor signals an internal fault.	<b>1</b> Cut and restore power supply. <b>2</b> If orange LED flashes again, replace sensor.
	The ORANGE LED flashes 2 x.	Irregularities in the power supply	<b>1</b> Check power supply. <b>2</b> Check wiring.
	The ORANGE LED flashes 4 x.	The sensor receives not enough IR-energy.	<b>1</b> Use the 1 m prism if possible. <b>2</b> Check the angle of the IR-curtains.
	The ORANGE LED flashes 5 x.	The sensor receives too much IR-energy.	<b>1</b> Use a low energy prism if possible. <b>2</b> Check the angle of the IR-curtains.
	The ORANGE LED is on.	The sensor encounters a memory problem.	<b>1</b> Cut and restore power supply. <b>2</b> If orange LED lights up again, replace sensor.
	The RED LED flashes quickly after an assisted setup.	The sensor sees the door during the assisted setup.	<b>1</b> Check the angle of the IR-curtains. <b>2</b> Launch a new assisted setup. <b>Attention: Do not stand in the detection field!</b>
	The RED LED lights up sporadically.	The sensor vibrates.	<b>1</b> Check if the sensor is fastened firmly. <b>2</b> Check position of prism and cover.
		The sensor sees the door.	<b>1</b> Launch an assisted setup and adjust the IR angle.
		The sensor is disturbed by lamps or another sensor.	<b>1</b> Choose a different frequency by remote control.
		The sensor is disturbed by the rain.	<b>1</b> Increase the IR-immunity filter to value 2 or 3. <b>2</b> Select presetting 2 or 3 by push button.
	The GREEN LED lights up sporadically.	The sensor is disturbed by rain and/or leaves.	<b>1</b> Select presetting 2 or 3 by push button. <b>2</b> Increase radar-immunity filter by remote control.
		Ghosting	<b>1</b> Change radar antenna angle.
		The sensor vibrates.	<b>1</b> Check if the sensor is fastened firmly. <b>2</b> Check position of cable and cover.
		The sensor sees the door or other moving objects.	<b>1</b> Remove the objects if possible. <b>2</b> Change radar antenna. <b>3</b> Change radar field size (sensitivity).
	The reaction of the door does not correspond to the LED-signal.		<b>1</b> Check output configuration setting. <b>2</b> Switch value 1 (A-P) to 4 (A-A) or 4 to 1 by remote control.



**SAFETY INSTRUCTIONS**

The manufacturer of the door system is responsible for carrying out a risk assessment and installing the sensor and the door system in compliance with applicable national and international regulations and standards on door safety. Only trained and qualified personnel may install and setup the sensor. The warranty is void if unauthorized repairs are made or attempted by unauthorized personnel. Avoid touching any electronic and optical components.



BEA hereby declares that the ACTIV8 ONE OFF is in conformity with the basic requirements and the other relevant provisions of the directives 1999/5/EC, 2004/108/EC. Angleur, November 2010 Jean-Pierre Valkenberg, Authorized representative The complete declaration of conformity is available on our website: [www.bea.be](http://www.bea.be)



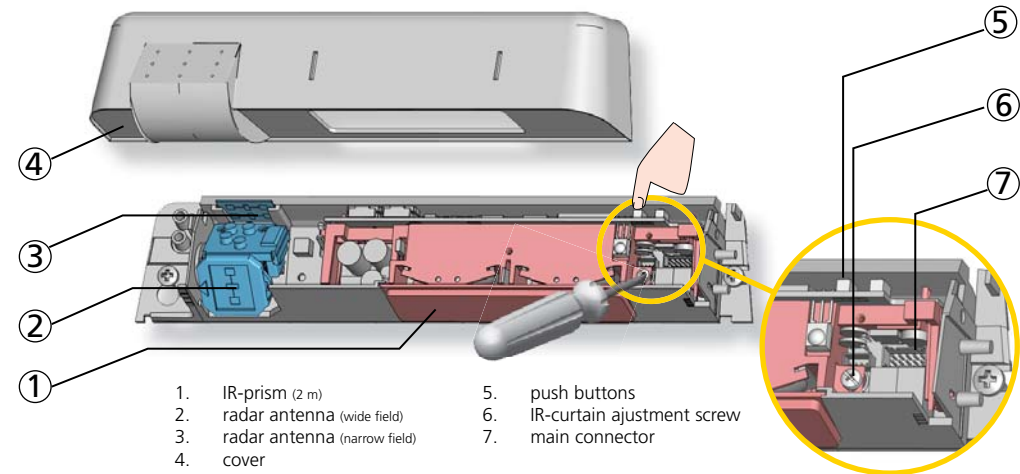
Only for EC countries: According to the European Guideline 2002/96/EC for Waste Electrical and Electronic Equipment (WEEE)

Please keep for further use  
Designed for colour printing

# ACTIV8 ONE OFF

Opening & safety sensor for automatic sliding doors

## DESCRIPTION

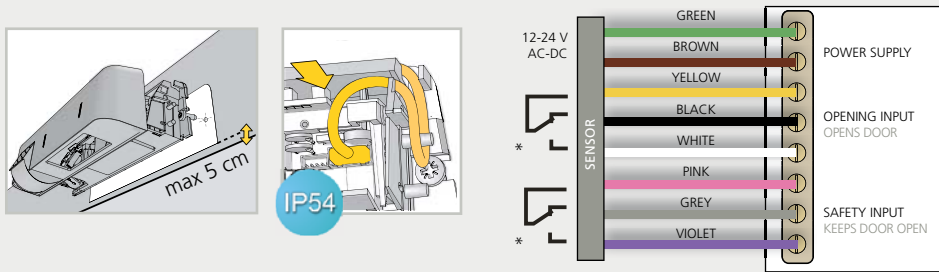


## TECHNICAL SPECIFICATIONS

Supply voltage:	12 V - 24 V AC +/-10% ; 12 V - 30 V DC -5%/+10%	
Power consumption:	< 3 W	
Mounting height:	1.8 m to 4 m	
Temperature range:	-25 °C to +55 °C	
Degree of protection:	IP54	
Expected lifetime:	5 years	
Norm conformity:	R&TTE 1999/5/EC; EMC 2004/108/EC	
	GREEN LED	RED LED
Detection mode:	Motion Min. detection speed: 5 cm/s	Presence Typical response time: <128 ms (max. 500 ms)
Technology:	Microwave doppler radar Transmitter frequency: 24.150 GHz Transmitter radiated power: < 20 dBm EIRP Transmitter power density: < 5 mW/cm2	Active infrared with background analysis Spot diameter: 0.1 m (typ) Number of spots: 24 or 12 by curtain Number of curtains: 2
Angle:	From 15 ° to 50 ° vertical (adjustable)	From -4 ° to +4 ° (adjustable)
Output:	Relay (free of potential) Max. contact voltage: 42 V AC/DC Max. contact current: 1 A (resistive) Max. switching power: 30 W (DC)/60 VA (AC)	Solid-state-relay (free of potential, free of polarity) Max. contact current: 100 mA Max. contact voltage: 42 V AC/DC
Hold time output signal:	0.5 s to 9 s (adjustable)	0.3 s to 1 s (not adjustable)

Specifications are subject to changes without prior notice.  
All values measured in optimal conditions.

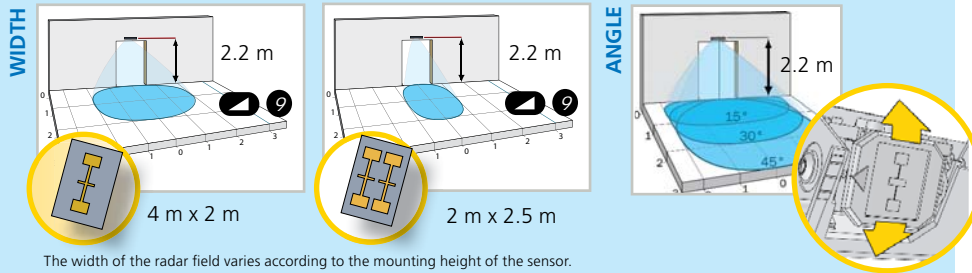
# 1 MOUNTING & WIRING



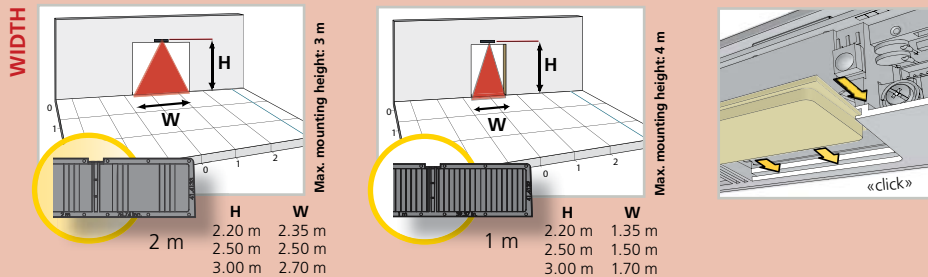
The door control unit and the door cover profile must be correctly earthed.

\* Output status when sensor is operational

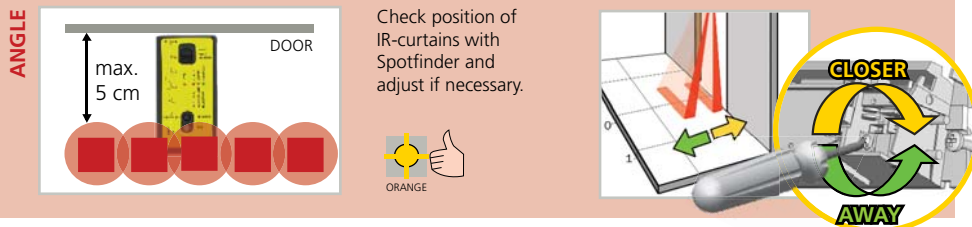
# 2 RADAR FIELD - OPENING IMPULSE



# 3 INFRARED FIELD - SAFETY

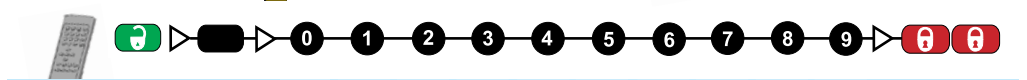
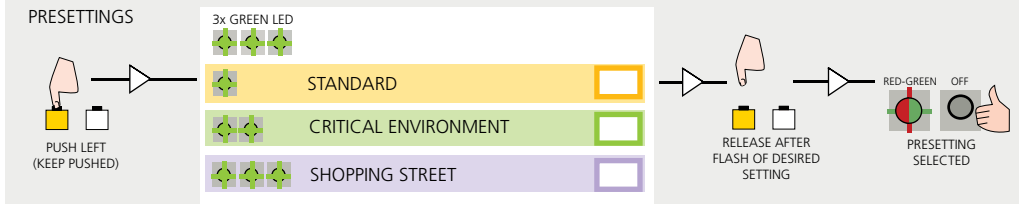
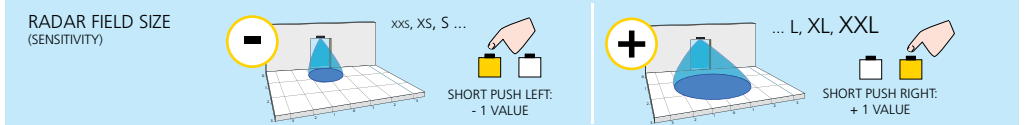


Detection field width indicated according to conditions defined in DIN 18650 and including dimension of test body CA.



**TIP:** Launch an **ASSISTED SETUP** to verify wiring, position of the curtains and correct functioning of the sensor. It is recommended to clean the optical parts at least once a year or more often if required due to environmental conditions.

# 4 SETTINGS (by push buttons and/or remote control)



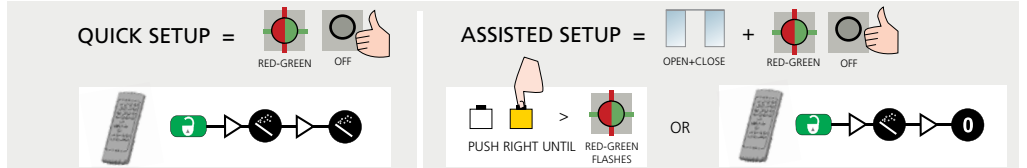
FIELD SIZE (SENSITIVITY)	XXS	XS	S	>	>	>	>	L	XL	XXL	L = 3.20 m x 1.40 m (at 2.2 m)
IMMUNITY FILTER		low	normal	high	>	>	>	>	>	>	
DETECTION MODE		bi	uni	uni PRM	uni AWAY	bi = two-way detection; uni = one-way detection towards sensor; uni PRM = for persons with reduced mobility; uni AWAY = away from sensor					
HOLD TIME OUTPUT SIGNAL		0.5 s	1 s	2 s	3 s	4 s	5 s	6 s	7 s	8 s	9 s

OUTPUT CONFIGURATION	A-P	P-A	P-P	A-A	A = active output (NO-contact) P = passive output (NC-contact)		Opening Safety
OUTPUT REDIRECTION	F1	motion or presence	motion and presence	opening output is active in case of:			
		0	1	2	0 motion detection 1 motion or presence detection 2 motion and presence detection		

NUMBER OF CURTAINS	service mode	1	2	dynamic mode	service mode = no detection is active during 15 minutes (maintenance). dynamic mode = 2 <sup>nd</sup> curtain is only active during motion detection.			
IMMUNITY FILTER*		normal	medium	high	>	>		
PULSE FREQUENCY		freq A		freq B		freq A+	freq B+	
MAX. PRESENCE TIME		30 s	1 min	2 min	5 min	10 min	20 min	60 min

FACTORY VALUES

# 5 SETUP (step out of the detection field during setup)



**IMPORTANT:** Test the good functioning of the installation before leaving the premises.  
\* In immunity 2 and 3, the standard detection capability is the same as in immunity 1 (factory setting). Environmental and installation conditions can affect the detection capability of the sensor or can impact the availability of the door system. During harsh conditions, the sensor can temporarily adapt the detection capability to ensure the availability of the door system.